



Call Toll Free: **+1 855 532 0366**
Email: **sales@marmitplastics.com**

Edmonton

20930 118A Ave
Edmonton, Alberta
Canada T5S 2S7
Tel no: +1 780 451 6729

Grande Prairie

64071 Hwy 43 TWP RD 714
Grande Prairie, Alberta
Canada T8V 3A5
Tel no: +1 780 532 0366

Reliable Plastic Tanks For Every Need



www.marmitplastics.com

Product categories:

- Barricades
- Burial Tanks
- Custom Welding Fabrications and Molding
- Dump Truck Liners and Lining Applications
- Lids, Fittings and more
- Liquid Level Alarms and Gauges
- Oilfield Products
- Plastic Chemical Tanks and Containment
- Plastic Storage Tanks
- Plastic Transport Tanks
- Portable Toilets
- Recreational Products
- Steel Tanks
- 'TOP FILL' Tank Filling System



Marmit Plastics Inc (MPI)
provides containment, storage
and transportation solutions for
different industries including:

- Agriculture
- Construction
- Oil and Gas
- Recreation
- Transportation
- And more...



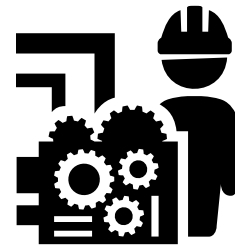
Client First

World-class customer
service that puts our
clients first



A Culture of Excellence

Guaranteed high-quality
plastic tanks and excellent
after sale service



Power of Human + Machine

A wide range of exceptional plastic
products and solutions molded by
Canada's leading rotational experts

Since 1990, **MPI** has been providing a range of **liquid storage solutions** to suit your requirements and applications. Over the years, MPI has achieved business excellence offering **outstanding service and manufacturing innovative high-quality plastic tanks**. We are trusted by our valued clients, communities and various industries we work with **providing creative solutions to storage issues**. MPI is dedicated to delivering **eco-friendly, sustainable plastic solutions** that protect the environment for future generations.

Marmit Plastics Inc (MPI) is one of the leading manufacturers of high-quality polyethylene tanks. Our products are proudly designed and produced in Alberta, Canada. From high-quality components like polyethylene, MPI poly tanks are a robust solution to **store a wide range of contents including water and chemicals**. With a large range of tanks from 5 to 11,000 gallons, MPI's seamless polyethylene tanks are **built to withstand abrasive weather conditions**. We can also work closely with you to develop CAD enhanced material specifications, wall thickness and mold configurations to precisely meet your needs.



Find us on Facebook
facebook.com/marmitplastics



Follow us on Instagram
@marmitplastics



Find us on LinkedIn
linkedin.com/company/marmitplastics



Table of Contents

About Marmit Plastics Inc	2
Credit Application	3
Services	4
Products	
Most Popular	
Plastic Chemical Tanks and Containment	14
Plastic Storage Tanks	17
Plastic Transport Tanks	20
Barricades	5
Burial Tanks	6
Custom Welding Fabrications and Moldings	8
Dump Truck Liners and Lining Applications	9
Lids, Fittings, and more	10
Liquid Level Alarms and Gauges	11
Oilfield Products	12
Portable Toilets	21
Recreational Products	22
Steel Tanks	23
'TOP FILL' Tank Filling System	25
Order Form	26
Contact Us	27

Shipping

Your orders can be picked up at the location near you. However, if you decide to get your order shipped, MPI will ship your order on the same day your order is booked. MPI ships Monday through Friday, excluding holidays. MPI will be happy to provide you with an accurate shipping estimate base on the weight, dimensions, and destination. If you would like to know the exact shipping cost for your order, please call +1 855 532 0366.

Credit Application



Open your camera, hover it to the QR code as it automatically opens the document in your internet browser.

Notice

Marmit Plastics Inc (MPI) reserves the right to change specifications, design and the price of the products described in this catalogue without notice. Images used in this catalogue are for advertising purposes only. Please use the product properly and with care. Improper use of the products may cause serious or fatal injury. Contact MPI directly for clarifications of the product's recommended use.





Start-to-finish SERVICES

All your storage solutions in one place

Marmit Plastics Inc (MPI) is proud of its **talented in-house team**. From **design and manufacturing** to **custom fabrication and installations**, MPI is a **one-stop shop solution** for all your containment and rotational molding needs.

Your trusted source for professional service

Choosing MPI means finding a **friendly, professional environment**. In addition to our commitment to **providing you with quality results**, MPI will work closely with you to **determine your specific requirements** and provide you with a **cost-effective solution** tailored to your unique needs.

Custom-made designs and fabrications

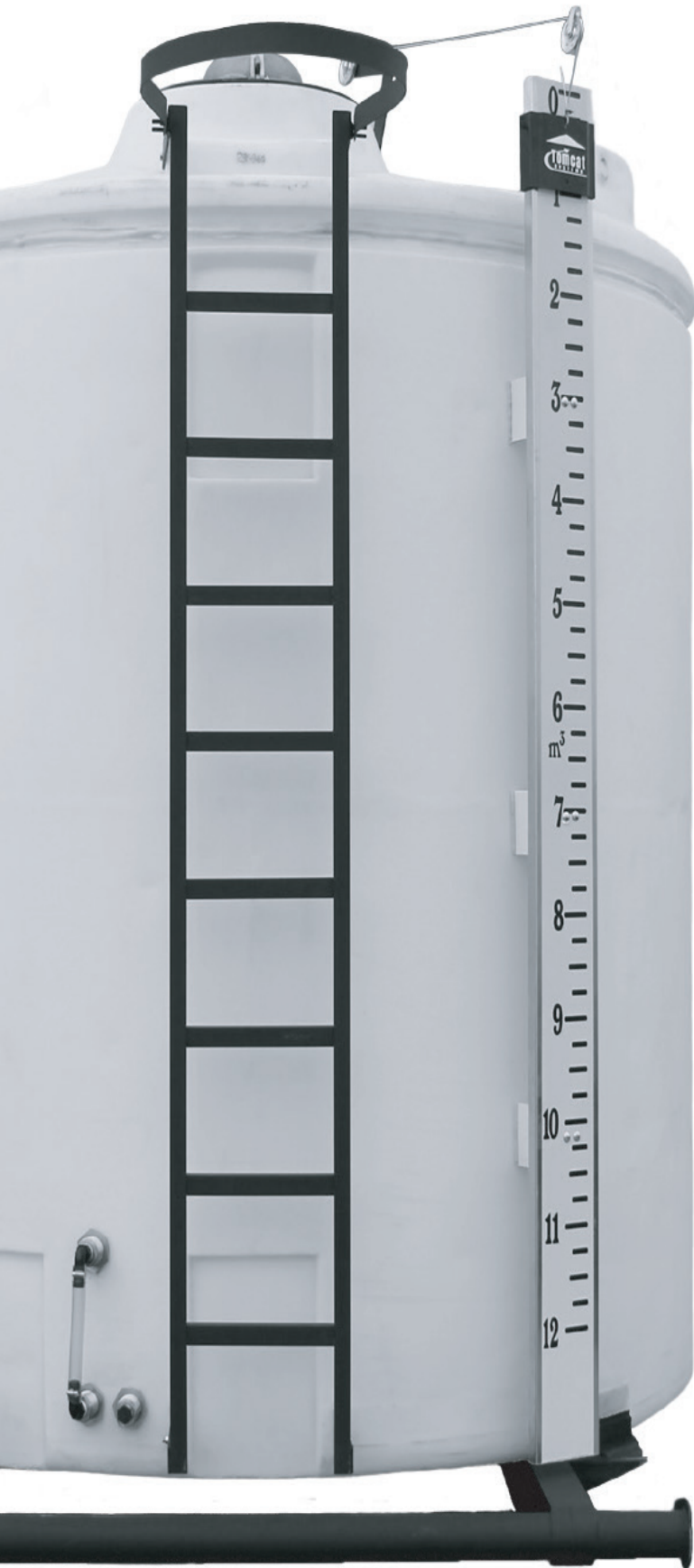
As a leader in rotational molding, MPI can create **innovative and simple solutions designed to meet your specific needs**. MPI **custom design a lasting and convenient solution** that works specifically for you.

Services offered

- Plastic fabrication customised to your specifications
- Custom bulkhead, lids and fittings installation
- Rotational molding and mold making
- Fabrication of custom plastic parts
- Tank repairs
- And more...

MPI also offers a variety of unique accessories for all your tank and on-site storage requirements.

Contact our experts now to learn about the different cost-effective and long-term solutions for your storage and transportation needs.



PRODUCTS



Marmit Plastics Inc (MPI) delivers premium quality roto-molded polyethylene products that can store or transport a wide variety of materials including water and chemicals. MPI offers one of the largest selections of plastic tanks in different styles, including **vertical, horizontal, septic, and many more**. Some are best suited for **above ground use**, while others perform well **underground**.

“MPI is the only provider in Western Canada that can manufacture, service or supply a wide range of tank options. MPI supplies agricultural, oil & gas, recreational and forestry industries with high-quality products and services every day.”

Owen Loos, General Manager, Marmit Plastics Inc

Barricades

Durable

High density polyethylene

Portable

100 lbs when empty. Bring to actual location then fill with water, sawdust, sand, or cement to desired weight

Interlocking

Allows you to create walls, corners or even an entire berm for containment purposes



Burial Tanks



Fibreglass Water Tanks

- Used for potable water
- NSF standard 61 approved
- 10-foot burial depth
- All tanks come with bonded 30" extension and lid
- More sizes available. Call us today for a quote

CODE	IMP GAL	LITERS	DIA x H	LBS
WB750	750	3,410	73" x 109"	300
WB1200	1,200	5,455	88" x 124"	400



Fibreglass Wastewater Tanks

- Corrosion resistant, eliminates leakage
- 10-foot burial depth
- CSA approved standard B66
- More sizes available. Call us today for a quote

CODE	IMP GAL	LITERS	DESCRIPTION	DIA x H	LBS
PB750	550	2,500	Pump Out - 2 Comp.	73" x 190"	360
PB1000	950	4,319	Pump Out - 2 Comp.	88" x 124"	470
H750	657	2,987	Holding - 1 Comp.	73" x 109"	300
HB1100	1,122	5,101	Holding - 1 Comp.	88" x 124"	400
SB1000	950	4,319	Syphon - 2 Comp.	88" x 124"	470

'Drop and Go' Series Fibreglass Tanks

- No special back fill required
- Will NOT rust, rot or corrode
- 7-foot burial depth
- Lightweight (320 lbs)
- CSA approved
- More sizes available. Call us today for a quote



CODE	IMP GAL	LITERS	DESCRIPTION	DIA x H
75H1000MD	1,000	3,785	Holding tank - 1 Comp.	81" x 84"
75P1000MD	750 WC	3,785	Siphon tank - 2 Comp.	81" x 84"
75S1000MD	750 WC	3,785	Siphon tank - 2 Comp.	81" x 84"
75W1000MD	1,000	3,785	Water tank - 1 Comp.	81" x 84"



Horizontal Fibreglass Tanks

500 - 10,000 gallons available

- Medium duty and heavy-duty options
- CSA approved

Styles available:

- Potable water storage
- Two compartment sewage tanks
- Two compartment syphon tanks
- One compartment sewage holding tank



ATV Cabs

- Manufactured for Pioneer Off-Road Rentals
- Not for resale

Custom options

- Custom tank
- Custom pig box
- Custom transport tank
- Lift station
- And more...



Oilfield Waste Bin

- High-density polyethylene
- Molded products custom designed from concept to completion

Dump Truck Liners and Lining Applications



“Clean, efficient and safe solutions for any load.”

Matrox® & Ramex® Ultra High Molecular Weight (UHMW) polyethylene dump truck liners provides affordable non-stick surfaces that stand up to the most extreme lining conditions. The Matrix lining system even handles asphalt.

- Low surface friction eliminates ‘load sticking’
- Even load release every dump cycle
- Reduced wash-out times
- Self-lubricating, impact resistant polymer
- Longer service life from brakes, hydraulics and bed
- Protects trucks from tip overs



Quick fact

MPI can modify tanks for you depending on its design, materials and applications.



Lids, Fittings and more



Poly Ball Valves



Poly Bulkheads



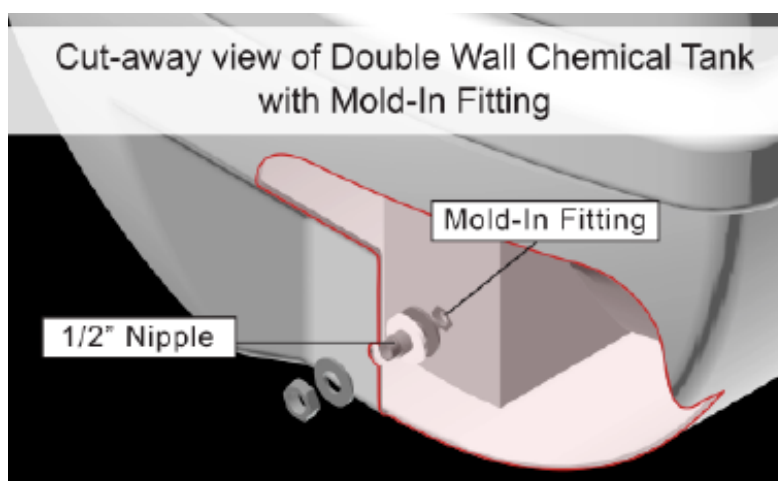
Vented and Non-vented Lids



Other available fittings

- Durable - polypropylene is glass filled for rugged strength and durability
- Economical and superior in performance
- Complete line of polypropylene fittings available
- Pictures show some of the fittings carried, more available at our locations

Marmit Plastics Inc (MPI) designed a specialized stainless steel fitting molded right into the tank.



Mold-in Tank Fitting

- 1/2" Dia 316 stainless steel tank outlet
- Each tank is individually pressure tested
- No inner gasket
- Reduced maintenance
- No gasket compatibility issues
- No more leaking tanks

Choose MPI's **Mold-in Tank Fitting** with the patented **Top Fill Tank Adapter** for the BEST spill protection in the industry.

Liquid Level Alarm and Gauges



Liquid Level Alarm Model 100

- Indoor alarm display with auto reset audible alarm
- High or low function selectable
- Digital RF probe, 15m (50') standard
- Accuracy of probe best in industry +/- 3mm (1/8")
- Continual self-test that probe functioning correctly
- Unit is complete with all wiring
- Custom probe cable lengths available
- No limit to transmission distance

Wireless Liquid Alarm Model 110

Monitors water level in pump chambers, cisterns, holding tanks, sumps, floor drains or truck tank. The indoor alarm will warn a threatening level condition.

- Outdoor NEMA 6P enclosure battery powered, 5m (16') digital RF probe
- High or low function selectable
- Wireless range 90m (300 feet)
- Indoor alarm display with auto reset audible alarm
- Continual self-test that probe and wireless radios functioning correctly
- Low battery warning
- Accuracy of probe, best in industry +/- 3mm (1/8")
- Custom probe cable lengths available





Barrel Dock

- Accommodates four barrels of containment
- Great for barrel storage

Battery Box

- Removable Lid
- Ground wire option
- Designed for easy fork-lift use

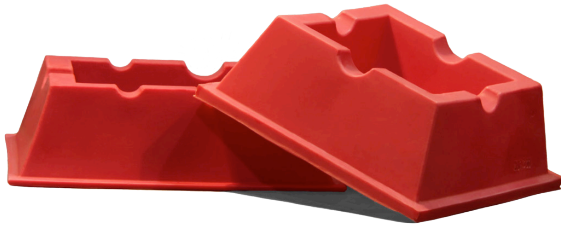


CODE	IMP GAL	LITERS	L x W x H	LBS
BATTERY BOX	175	795	48" x 48" x 24"	90



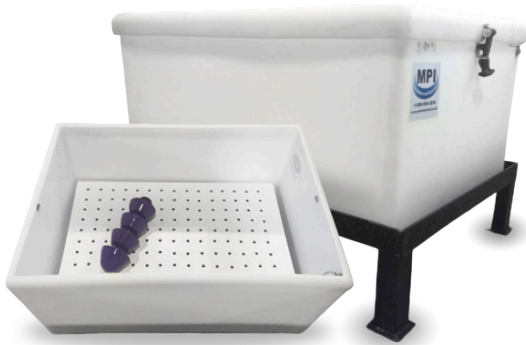
Hose Stand

CODE	L x W x H	LBS
HOSE STAND	22" x 22" x 20"	9



Line Trays

CODE	L x W x H	LBS
LINE TRAY SMALL	24" x 24" x 8"	10
LINE TRAY LARGE	30" x 24" x 6"	12.5



Pig Box

- Pipeline pig containment
- Equipped with ground wire, lid, handle and tie-downs

CODE	IMP GAL	LITERS	L x W x H	LBS
PIG BOX 50	50	231	36" x 25" x 16"	35
PIG BOX 65	65	322	40" x 28" x 20"	50



Pipe Stand

- 23" pipe cones
- 2" - 8" pipe diameter
- Heavy weight construction
- Tested to handle 2,300 kg
- Tabbed for easy denesting
- Optional company name plate

CODE	H x DIA	LBS
PIPE STAND	23" x 22"	9



Sumps

- Required in a new home construction
- Small and large capacity
- Pre-cut access hole

CODE	IMP GAL	LITERS	H x DIA	LBS
SUMP	40	182	30" x 24"	20
SUMP (FS)	108	490	30" x 36"	20

Plastic Chemical Tanks and Containment



Large Double Wall Tanks

- Built-in secondary containment
- Stainless steel bulkhead fitting
- Large 12" access lids
- Stainless steel grounding cable

CODE	IMP GAL	LITERS	L x W x H	LBS
CHEM300DW	300	1,363	98" x 45" x 45"	309
CHEM500DW	500	2,273	103" x 58" x 60"	464
CHEM1000DW	1,000	4,546	116" x 74" x 71"	672
STAND300	4 feet	—	46 ³ / ₈ " x 69 ³ / ₄ " x 58"	257
STAND500	4 feet	—	54" x 69 ³ / ₄ " x 58"	266
STAND1000	4 feet	—	72 ¹ / ₄ " x 87 ¹ / ₂ " x 73 ³ / ₁₆ "	551

* 4 ft ladders with platform available

Small Double Wall Tanks

- Built-in secondary containment
- Stainless steel bulkhead fitting
- 7" access lids
- Stainless steel grounding cable



CODE	IMP GAL	LITERS	L x W x H	LBS
CHEM50DW	50	227	40" x 28" x 20"	76
CHEM100DW	100	454	62" x 34" x 27"	138
CHEM150DW	150	681	62" x 34" x 36"	175
STAND50	4 feet	—	42" x 30" x 48"	100
STAND100/150	4 feet	—	54" x 69 ³ / ₄ " x 48"	150

* 4 ft ladders and stackable stands available



Single Wall Tanks

- Stainless steel bulkheads
- Free flow screened venting

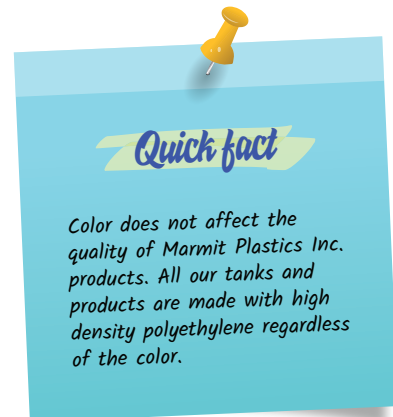
CODE	IMP GAL	LITERS	L x W x H	LBS
CHEM125SW	125	568	63" x 24" x 27"	72
CHEM185SW	185	840	62" x 34" x 36"	92
CHEM300SW	300	1,363	72" x 40" (dia)	163
CHEM500SW	500	2,273	86" x 50" (dia)	250
CHEM1000SW	1,000	4,546	96" X 64" (dia)	395
STAND300	4 feet	—	46 3/8" x 69 3/4" x 58"	257
STAND500	4 feet	—	54" x 69 3/4" x 58"	266
STAND1000	4 feet	—	72 1/4" x 87 1/2" x 73"	551

* 4 ft ladders with platform available



80 Barrel

- Steel skid unit with ladder
- Gauge board, thief hatch
- Optional sizes of bulkheads



CODE	IMP GAL	LITERS	L x W x H	LBS
80BBLDW	2,700	12,258	100" x 111"	1,325
80BBLSHORTSKID	—	—	127" x 83" x 6"	750
80BBLSKID	—	—	150" x 83" x 6"	800



Secondary Containment

- Freight friendly; nestable
- Up to 1,100 imperial gallon secondary containment to fit all plastic and steel tank stands

CODE	IMP GAL	LITERS	L x W x H	L x W (inner)	LBS
DRIPTANK	3	15	23" x 5" x 12"	-	2.5
CT100	100	454	56" x 50" x 12"	49" x 43"	37.5
CT175	175	795	68" x 55" x 19"	51" x 38"	87.5
CT275	275	1,250	80" x 57" x 26"	57" x 34"	100
CT350	350	1,591	98" x 77" x 17"	81" x 60"	124
CT550	550	2,500	111" x 88" x 22"	91" x 68"	180
CT1100PL	1,100	5,000	155" x 111" x 22"	135" x 91"	350
CT1100ST	1,100	5,000	202" x 88" x 22"	182" x 68"	340



Drip Tray

For use under vehicles, valves and in many low volume potential leak situations



CODE	IMP GAL	LITERS	L x W x H	LBS
DRIPTRAY	20	91	64" x 27" x 5"	22

Plastic Storage Tanks



Plastic Cylinder Tanks

- Agricultural and industrial uses
- Suitable for above ground storage, liquid fertilizer and rain water collection
- Safe for drinking water
- FDA and food grade approved
- Manufactured in Western Canada
- Comes with non-vented or vented lids
- High-density polyethylene with UV stabilizer
- White or black colour available
- Stainless steel, PVC or polyethylene fittings are available
- Lifting or tie-down lugs
- Liquid densities up to 19 lbs per gallon
- 16"-22" lid with 4" breather
- Siphon tube
- Ribbed design
- Heavy-duty design

CODE	IMP GAL	LITERS	DIA x H	LBS
C65	65	295	25" x 39"	28
C160	160	727	29" x 74"	192
C300FB	300	1,362	40" x 74"	132
C500FB	500	2,270	50" x 72"	176
C850	850	3,864	84" x 55"	198
C1000	1,000	4,546	72" x 82"	200
C1200	1,200	5,455	84" x 73"	225
C1500	1,500	6,820	84" x 92"	308
C2000	2,000	9,092	84" x 117"	400
C2700	2,700	12,274	101" x 108"	825

Plastic Cylinder Tanks

CODE	IMP GAL	LITERS	DIA x H	LBS
H0120UR	100	454	28" x 48"	120
H0145UR	120	545	29" x 59.5"	145
H0270UR	225	1,022	46" x 66"	270
H0360UR	300	1,362	46" x 74"	360
H0780UR	650	2,955	60" x 69"	780
H1200UR	1,000	4,546	83" x 60"	1,200
H3600UR	3,000	13,638	96" x 120"	
H5000UR	4,200	19,093	125" x 120"	
H6000UR	5,000	22,730	150" x 120"	
H11000UR	9,160	41,642	164" x 147.5"	



Plastic Loaf Tanks

- These tanks are suitable for a variety of applications
- Vented lid and bulkhead fitting included
- Excellent for extra storage at the cabin or small transportation top-ups
- Ideal for additional RV and camping water storage
- Great for horse trailers

CODE	IMP GAL	LITERS	L x W x H	LBS	LID SIZE
L40	40	182	35" x 22" x 18"	28	4"
L95	95	432	47" x 22" x 27"	50	4"
L125	125	568	62" x 34" x 27"	76	7"
L150	150	682	48" x 31" x 32"	72	8"
L185	185	840	62" x 34" x 36"	95	7"
L200	200	909	57" x 29" x 36"	100	8"
L550	550	2,500	65" x 43" x 69"	200	15"

Plastic Vertical Box Tanks

- Suitable for residential water storage
- Each tank includes a vented lid and 2" bulkhead fitting
- Ribbing on tanks allows for full capacity storage with ease
- Fits through most doorways



CODE	IMP GAL	LITERS	L x W x H	LBS
VBT175	175	795	38" x 26" x 69"	132
VBT250	250	1,136	42" x 31" x 77"	175
VBT350	350	1,591	62" x 28" x 61"	150



Plastic Horizontal Box Tanks

- Perfect for tight spaces
- Pigments for grey water applications
- Can be customized 100% - fittings go where you need them

CODE	IMP GAL	LITERS	L x W x H	LBS
HBT3	3	14	15" x 13" x 6"	5
HBT8	8	36	35" x 12" x 7"	10
HBT15	15	68	22" x 18" x 12"	10
HBT25	25	114	51" x 19" x 9"	25
HBT50	50	227	35" x 26" x 17"	28
HBT65	65	295	39" x 27" x 20"	38
HBT130	130	590	72" x 30" x 17"	70
HBT150	150	681	67" x 44" x 12"	77
HBT400	400	1,816	93" x 56" x 23"	150



Plastic Transport Tanks



Plastic Leg Tanks

- Excellent for water transportation
- Molded legs act as baffles to reduce liquid movement during transport
- All tanks include an 8" vented lid and 2" bulkhead fitting
- FDA and food grade approved polyethylene tank
- Optional site gauge
- Optional extra bulkheads
- 16" sealed locking lid with 4" breather
- Ribbed design
- UV stabilizer protected
- Liquid densities to 19 lbs per gallon

CODE	IMP GAL	LITERS	L x W x H	LBS
LT135	135	614	59" x 28" x 31"	60
LT165	165	750	51" x 38" x 35"	71
LT275	275	1,250	65" x 41" x 42"	100
LT370	370	1,682	60" x 51" x 49"	127
LT500	500	2,273	87" x 50" x 49"	150
LT1250	1,250	5,682	101" x 81" x 67"	396
H0040LP	33	40	30" x 21" x 24"	151
H0100LP	85	100	41" x 35" x 21"	386
H0265LP	220	265	53" x 38" x 40"	835
H0300LP	250	300	70" x 47" x 34"	1,136
H0325LP	325	390	83" x 38" x 42"	1,230
H0650LP	540	5,682	84" x 48.5" x 53"	2,455
H1201LP	1,000	12,730	99" x 77" x 53"	5,455
H2000LP	1,650	15,142	112" x 89" x 60"	7,501
H2500LP	2,100	12,730	147" x 89" x 60"	9,547
H3400LP	2,800	12,730	77" x 92" x 147"	
H4000LP	3,330	15,142	92" x 92" x 147"	

Portable Toilets



Portable Toilets

- Maximum ventilation
- Roomy interior
- Anti-slip floor surface for improved safety
- Occupancy signal latch
- Two tissue rolls
- Sanitary seat deck and floor design
- Translucent roof for better lighting



Comfort-XL

- Barrier-free door sill
- Extra wide door
- Fits all wheelchairs
- Spacious interior for wheelchair maneuverability
- Handrail support for assisted mobility
- Privacy latch
- Occupancy indicator

CODE	L x W x H	LBS
PJ-PHN3	47" x 43.5" x 91"	165
PJ-COMFORTXL	62" x 62" x 91"	240





Dock Floats

Great for floating docks or wharfs

CODE	L x W x H	LBS
DOCK FLOAT	48" x 20" x 11"	25



Open Top Sleigh

- Heavy wall polyethylene (1/4" - 3/8")
- 1 - 1/4" tubing hitch for heavy loads
- Optional UHMW wear strips

CODE	L x W x H	LBS
WEEKENDER	72" x 24" x 11"	70



Quad Tub and Trailer

- 1,250 lbs stub axles
- 2" x 2" angle iron framing and square tubing tongue
- Perfect for the outdoor enthusiast or the avid hunter

CODE	L x W x H	LBS
QUAD TRAILER	72" x 51" x 36"	95
QUAD TUB	57" x 51" x 30"	75



Trapper

- Just like its name “Trapper”
- Closing lid
- Additional space on rear for carrying fuel
- 1-1/4” tubing hitch for heavy loads
- Optional UHMW wear strips

CODE	L x W x H	LBS
TRAPPER	87” x 25” x 25”	102

Steel Tanks

Double Wall Steel Tanks

- 100% secondary containment
- 360° corrosion resistant exterior
- Internal coatings available for volatile products
- Industry leading construction methods ensure durability and liquid-tight storage



CODE	IMP GAL	LITERS	LENGTH x DIA	LBS
100 DW STEEL	100	455	48” x 28”	350
300 DW STEEL	300	1,363	72” x 38”	700
500 DW STEEL	500	2,273	72” x 50”	880
1000 DW STEEL	1,000	4,546	144” x 50”	1,500





Single Wall Steel Tanks

- Ideal for chemical and fuel applications
- Finished with heavy-duty industrial polyurethane
- Coating - ULC S601 rated - latest revision
- Structural plate ASTM AB6 or equivalent

CODE	IMP GAL	LITERS	LENGTH x DIA	LBS
300 SW STEEL	300	1,363	72" x 38"	600
500 SW STEEL	500	2,273	72" x 50"	770
1000 SW STEEL	1,000	4,546	144" x 50"	975

Used Oil Double Wall Containment

- 100% contained tank design
- Durable industrial grade powder coating
- Lockable fill/spill container
- Comes with dump screen
- Structural support saddles
- Listed to ULC S652 latest edition
- D-55 compliant



CODE	IMP GAL	LITERS	LENGTH x DIA	LBS
SC-300 Gallon DW Used	250	1,135	72" x 38"	700
SC-500 Gallon DW Used	416	1,892	72" x 50"	880
SC-1000 Gallon DW Used	832	3,785	144" x 50"	1,500

* Stair kit available for 500 and 1000 gallon

'TOP FILL' Tank Filling System



- The industry's highest level of safety for filling tanks
- Safe, easy and fast
- Avoid static discharge
- Eliminate splash filling
- Easy to install
- Fills consistently to the same level
- Retrofitting available on both plastic and steel tanks

Quick fact

The condition of the water is the most important factor to determine how fast algae will grow in your tank.

The cleaner the water, the less algae growth. However, green or black tanks will certainly deter algae growth.



Please complete the form and fax it to +1 780 451 6829 or email it to sales@marmitplastics.com

Products of interest

Please tick the product category you are interested with then include the code, quantity or size of the product in the description box.

<input type="checkbox"/> Barricades <input type="text"/>	<input type="checkbox"/> Liquid Level Alarms and Gauges <input type="text"/>	<input type="checkbox"/> Portable Toilets <input type="text"/>
<input type="checkbox"/> Burial Tanks <input type="text"/>	<input type="checkbox"/> Oilfield Products <input type="text"/>	<input type="checkbox"/> Recreational Products <input type="text"/>
<input type="checkbox"/> Custom Welding Fabrications and Molding <input type="text"/>	<input type="checkbox"/> Plastic Chemical Tanks and Containment <input type="text"/>	<input type="checkbox"/> Steel Tanks <input type="text"/>
<input type="checkbox"/> Dump Truck Liners and Lining Applications <input type="text"/>	<input type="checkbox"/> Plastic Storage Tanks <input type="text"/>	<input type="checkbox"/> 'TOP FILL' Tank Filling System <input type="text"/>
<input type="checkbox"/> Lids, Fittings and more <input type="text"/>	<input type="checkbox"/> Plastic Transport Tanks <input type="text"/>	<i>Comments or suggestions:</i> <input type="text"/>



FIVE WAYS TO ORDER

- 1 Call Toll Free: +1 855 532 0366
- 2 Email: sales@marmitplastics.com
- 3 www.marmitplastics.com
- 4 Fax: +1 780 451 6829
- 5 Offices:
20930 118A Ave
Edmonton, Alberta T5S 2S7
64071 Hwy 43 TWP RD 714
Grande Prairie, Alberta T8V 3A5

First Name _____ Last Name _____
 Job Title _____ Company Name _____
 Address _____ City _____ Province _____
 Email _____ Mobile _____

Yes, I would like to receive information about MPI's products and services.

Please tick if you would like to pay by:

- Credit Card
- Cash
- Cheque
- Bank Transfer
- Bank Draft

Cheque or cash payment:

A cheque or cash payment can be made at the Marmit Plastics Inc offices:

Edmonton
20930 118A Ave
Edmonton, Alberta, T5S 2S7

Grande Prairie
64071 Hwy 43 TWP RD 714
Grande Prairie, Alberta T8V 3A5

Heavy-Duty Plastic Transport Tanks

UP TO 4,000 GALLONS

Request a quote:

Call Toll-Free: +0366 532 855 1

Email: sales@marmitplastics.com

LIQUID
FERTILIZER
COMPATIBLE



TIGHT SEAL TO
PREVENT LEAKS
AND SPILLS



LIQUID
DENSITIES
UP TO 19 LBS
PER GALLON



UV STABILIZER
PROTECTION



MADE OF
HIGH-DENSITY
POLYETHYLENE



FDA AND FOOD
GRADE APPROVED
POLYETHYLENE



OUTLET VALVE TO
ALLOW THE CONTENTS
TO BE DRAINED OR
DISPENSED



MANUFACTURED
IN WESTERN
CANADA



www.marmitplastics.com

visit our branches

20930 118A Ave.,
Edmonton, Alberta, T5S 2S7

64071 Hwy 43 TWP RD 714,
Grande Prairie, Alberta, T8V 3A5



Reliable Plastic Tanks for Every Need

Call Toll Free: +1 855 532 0366
Email: sales@marmitplastics.com
www.marmitplastics.com

Visit one of the branches

EDMONTON

20930 118A Ave
Edmonton, Alberta
Canada T5S 2S7
Tel no: +1 780 451 6729

GRANDE PRAIRIE

64071 Hwy 43 TWP RD 714
Grande Prairie, Alberta
Canada T8V 3A5
Tel no: +1 780 532 0366



Like us on Facebook
facebook.com/marmitplastics



Follow us on Instagram
@marmitplastics



Find us on LinkedIn
linkedin.com/company/marmitplastics

